



TSX-V: **GRG**  
FSE: **GAC**



## JV Project Portfolio Executive Summary:

**Bruce Smith**

September 5, 2012



**Projects. People. Performance.**

# Disclaimer

## Forward-Looking Statements

- This presentation contains forward-looking statements, including but not limited to comments regarding predictions and projections. Forward-looking statements address future events and conditions and therefore involve known and unknown risks and uncertainties. You can identify these statements by forward-looking words such as "believes", "expects", "plans", "projects", "estimates" and other words of similar meaning. They can also be identified by the fact that they do not relate strictly to historical or current facts. Many factors can cause actual results to differ from these forward-looking statements, including inaccurate assumptions and a broad variety of other risks and uncertainties, including some that are known and some that are not. The known risks are discussed in greater detail in the Company's prospectus under the heading "Risk Factors" and in our Management Information Circulars which are filed on SEDAR ([www.sedar.com](http://www.sedar.com)) and with the British Columbia, Alberta and Ontario Securities Commissions. No forward-looking statement can be guaranteed and actual results may differ materially from those currently anticipated in such statements. We do not assume the obligation to update any forward-looking statement.

## Cautionary Note to U.S. Investors

- The United States Securities and Exchange Commission ("SEC") permits mining companies, in their filings with the SEC, to disclose only those mineral deposits that a company can economically and legally extract or produce. We use certain terms in this presentation, such as "mineral resources", "measured", "indicated", and "inferred resources", that the SEC guidelines prohibit being used.



**GROSSO GROUP**





## **Potreriillos (San Juan)**

Epithermal Gold Silver Project.

## **Pescado (San Juan)**

Guacamayo style – Sed hosted gold.

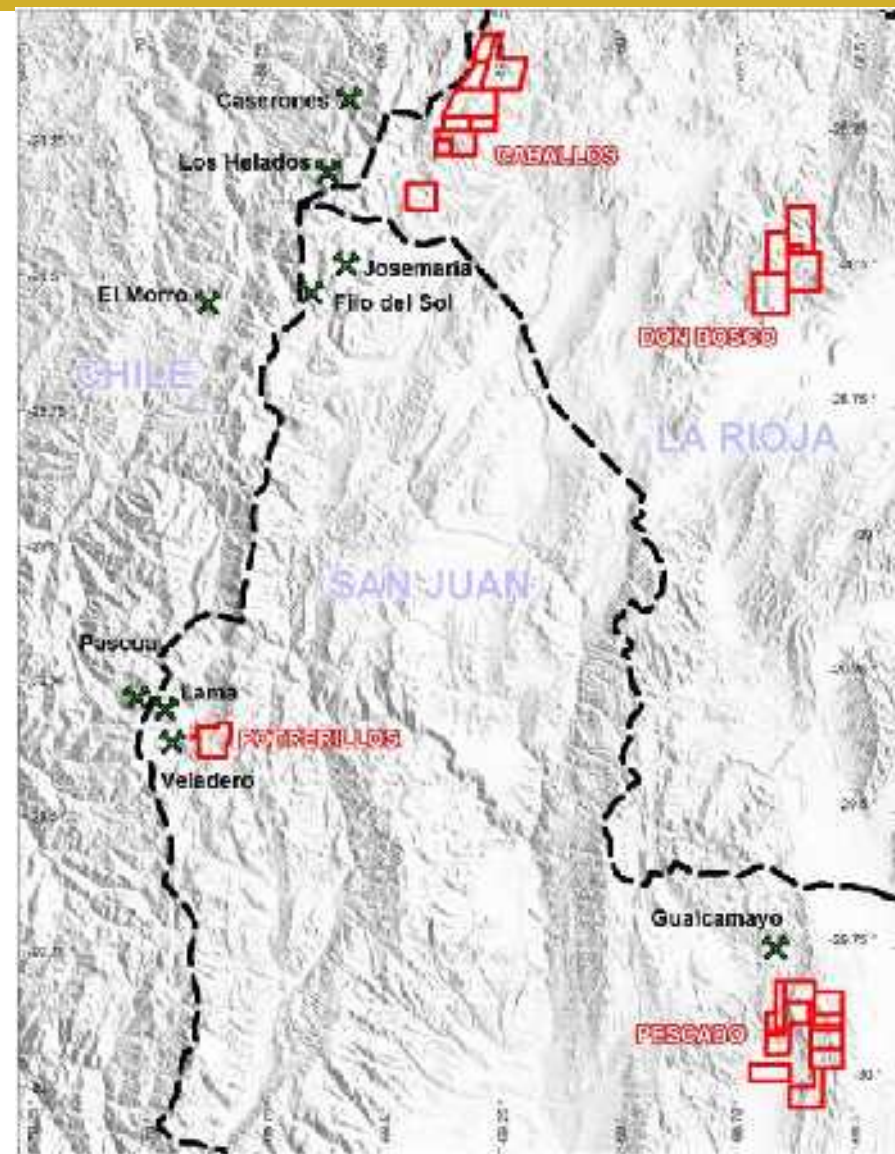
## **Don Bosco (La Rioja)**

Copper Gold Sedex / Scarn

## **Caballos (La Rioja)**

Copper Gold Porphyry

**All Projects 100% Golden Arrow and  
Drill Permitted**





# Potreriillos Epithermal Gold - Silver Project

San Juan, Argentina

Executive Summary



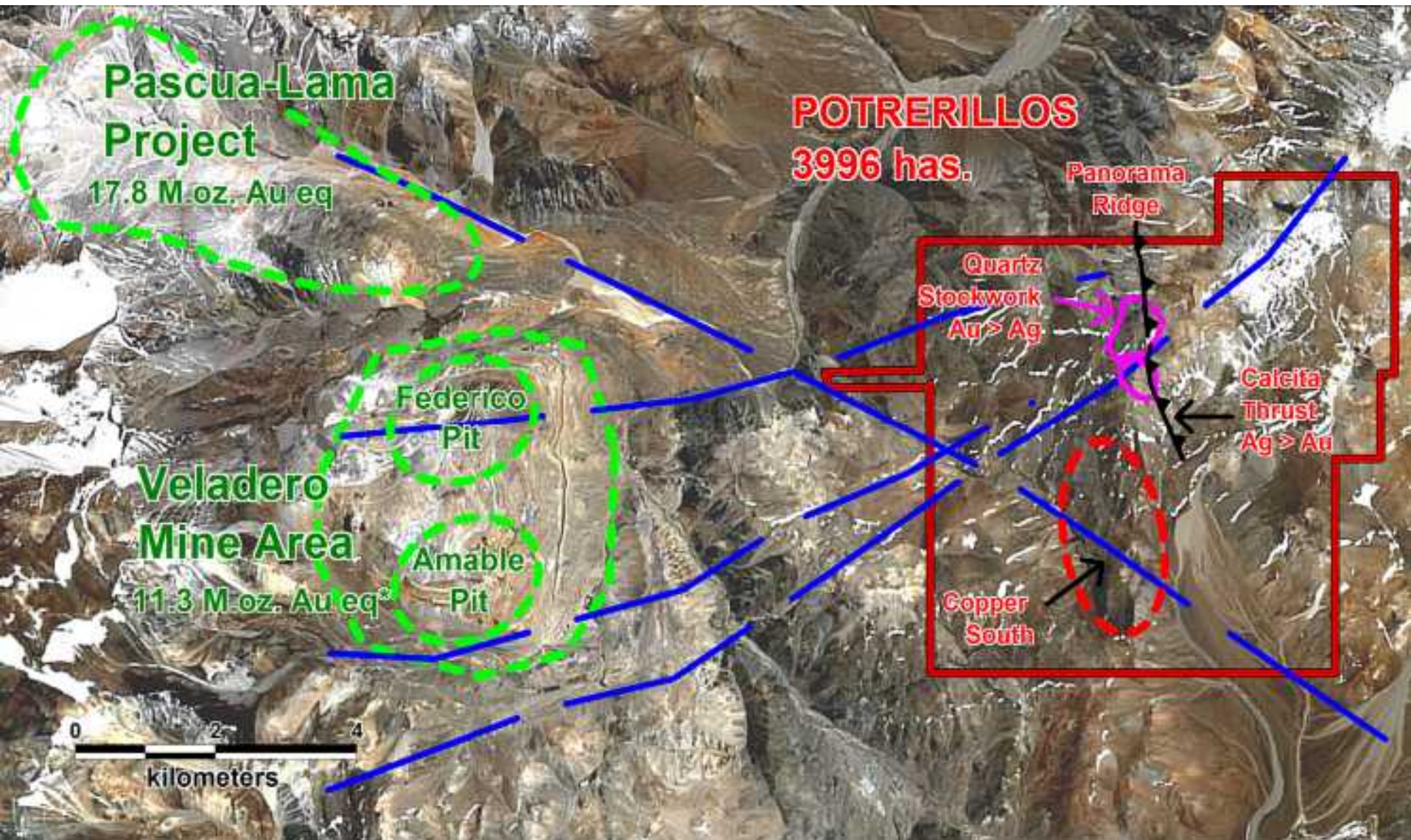


- 3996 ha in the Valle de Cura district, San Juan.
- Epithermal Gold – Silver Project .
- 6 Km East of Veladero Mine and Pascua Lama Project.
- Potential to discover multi-million ounce deposit.





# Potreriillos Geology







## Thrust

Gold / Silver  
Calcite and Silica bands

- High grade gold and silver.  
(Best rock chip sampling:  
15.4 g/t Au and 2995 g/t Ag)

- Large (up to 20m thick)  
calcite quartz veins have  
developed along NS thrust  
system and are traced for  
3km.

- Cross cut system of quartz  
veins up to 2m thick and  
grades up to 15.4 g/t Au and  
844 g/t Ag.

- Under-explored with just  
508 m in 3 drillholes  
Panorama ridge target.





## Pescado Gold Project San Juan, Argentina

Executive Summary



**GOLDEN ARROW**  
RESOURCES CORPORATION



GROSSO GROUP MEMBER COMPANY

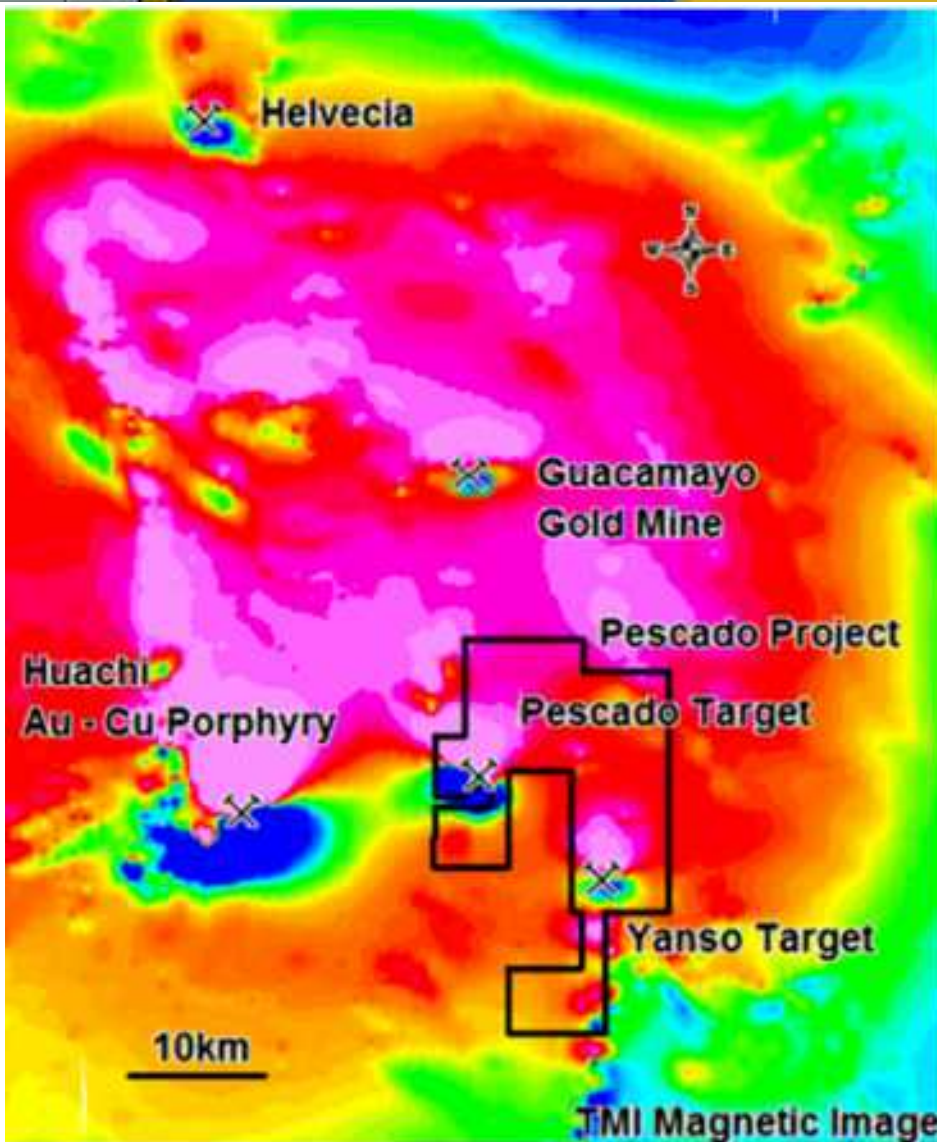
# Pescado Regional Setting

Potential for multi-million ounce gold deposit.

25,700 hectares.

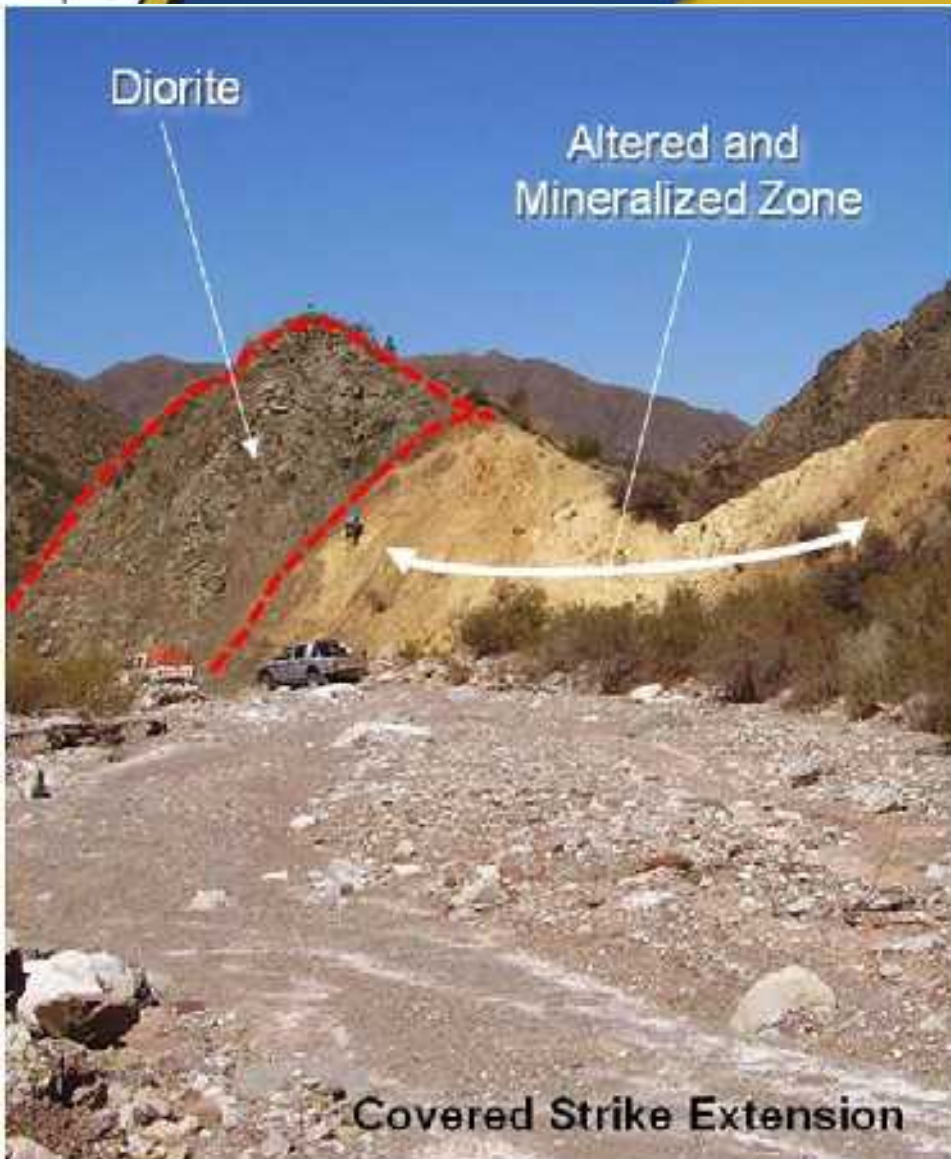
## Two Principal Gold Targets:

1. Intrusive-related gold mineralization similar to the Hauchi gold porphyry 16km NW of Pescado
  2. Gualcamayo-style structurally-controlled and disseminated gold mineralization in sediments.
- Two magnetic targets define where plutonic rocks have intruded the sedimentary sequence.
  - Coincident gold anomalies with intrusive targets.





# Pescado Project - Yanso Target



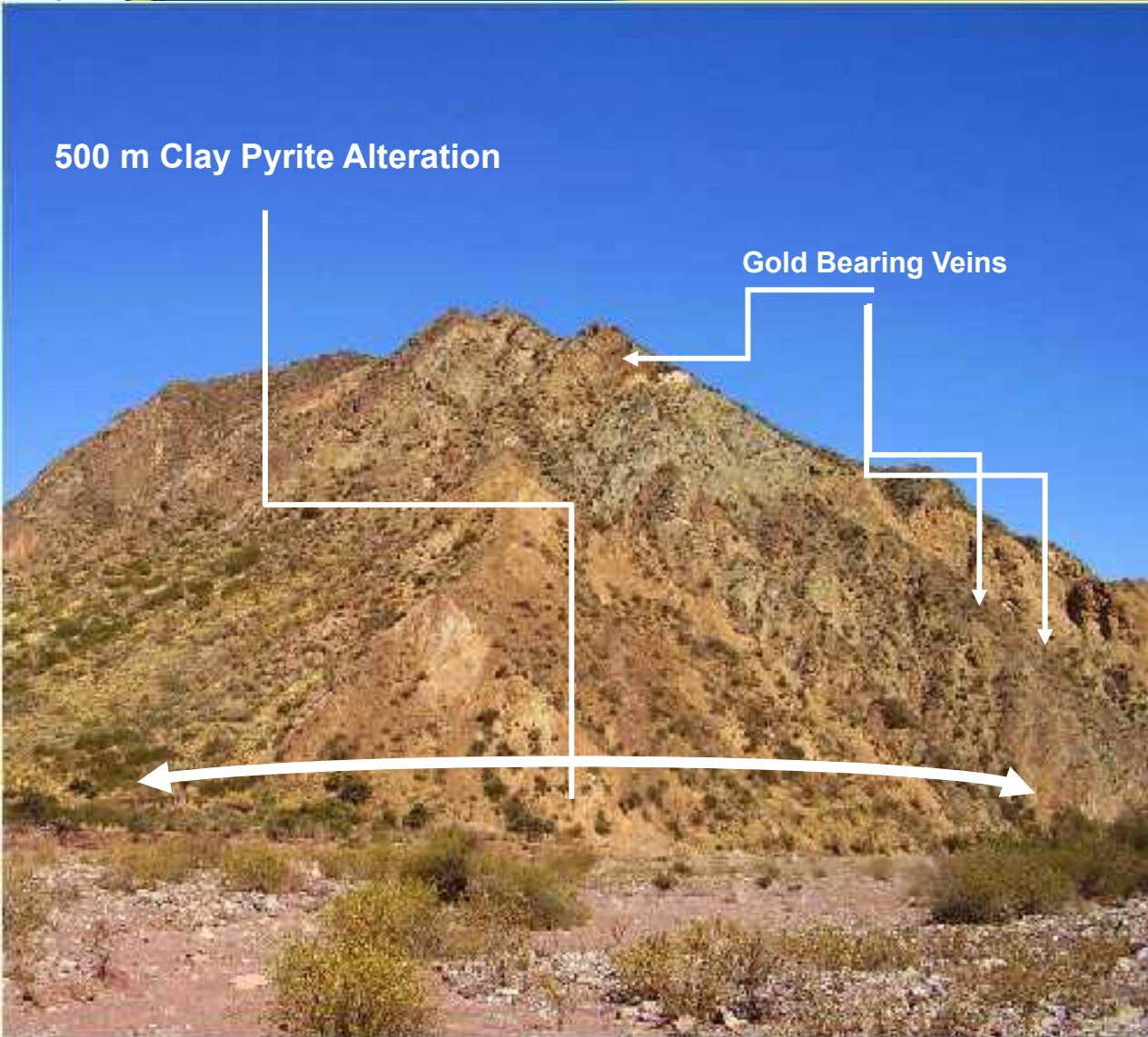
- 300m x 30m zone of alteration.
- Strong silica-clay-pyrite alteration of sandstones is exposed at the contact with diorite intrusive.
- Four short trenches were sampled in this area with maximum rock chip sample of 3.40 g/t Au.
- Trench samples averaged up to 0.64 g/t AuEQ (Au-Ag) over 19m.

(AuEQ calculated using \$1600oz Au and \$32oz Ag)

# Pescado Target

**500 m Clay Pyrite Alteration**

**Gold Bearing Veins**



- Dispersed gold mineralization 5 km x 3 km area.
- Coincident large magnetic anomaly indicating an intrusive center.
- Wide zones (up to 500m) of clay-pyrite alteration cut by narrow faults (1-2m wide) where grades range up to 17 g/t Au.
- Large gold soil (2.8 km by 1.1 km) anomalies coincident with the predicted intrusive center.





**Don Bosco  
Copper Gold Project  
La Rioja, Argentina**

Executive Summary

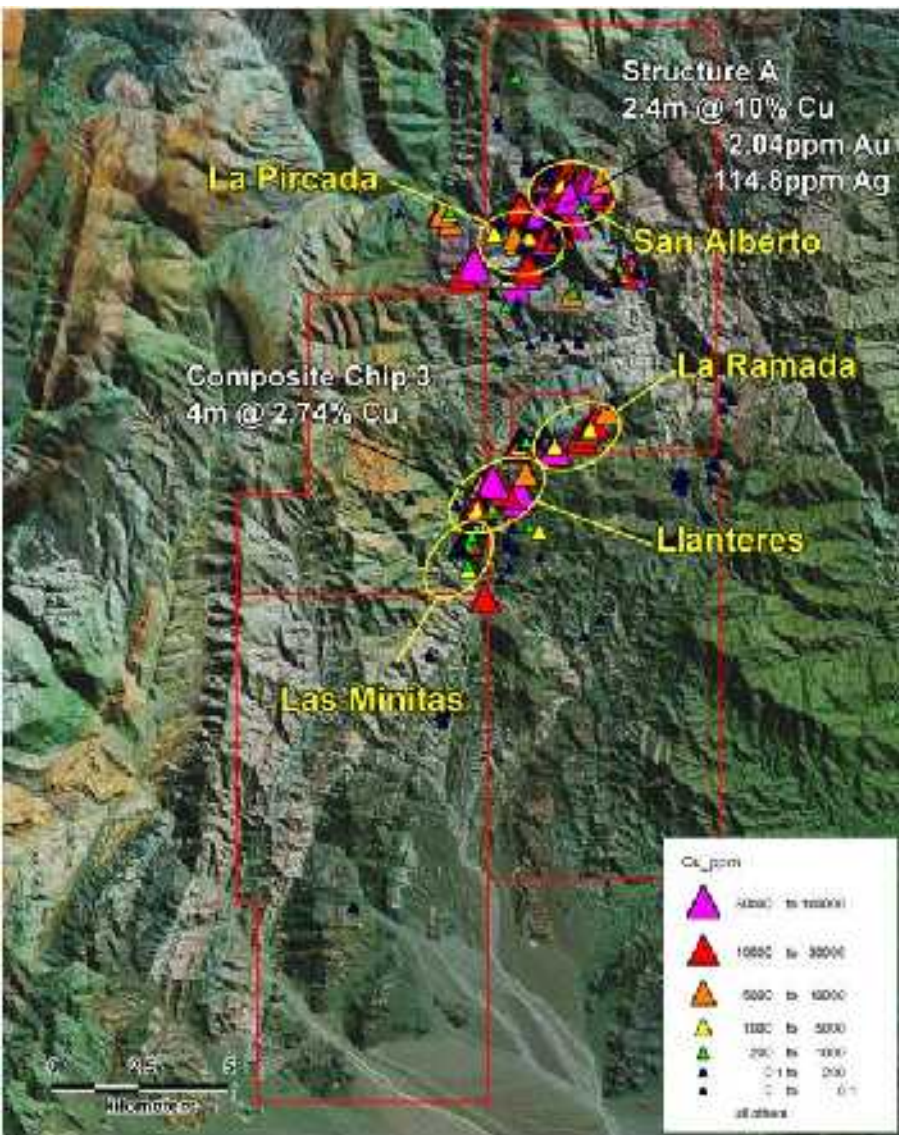


**GOLDEN ARROW**  
RESOURCES CORPORATION



GROSSO GROUP MEMBER COMPANY

# Don Bosco Copper Gold



- Multi-Target copper gold silver project.
- 19,557 ha in La Rioja Province,
- **Copper Gold Silver Skarn:**
- **Copper Gold Sediment Hosted:**  
(SEDEX?)
- **Copper Gold Breccias:**



# Don Bosco – Skarn Targets

## **San Alberto Zone (Skarn)**

11 m averaging 0.53 g/t Au, 46 g/t Ag 1.77 % Cu  
(composite chip from a massive amphibole skarn).

## **El Pircarda Zone (Skarn)**

2.4 m averaging 2.04 g/t Au, 114 ppm Ag, 10.0% Cu  
(composite chip from a iron skarn band).



# Sediment Hosted and Breccias



## **Llantenos Zone**

### **Sediment hosted and structures.**

1m chip 25% Cu, 8.6 g/t Ag

33 m averaging 0.49% Cu  
(composite chip sample)

## **La Ramada Zone**

### **Gold Copper Veins and Breccias**

4 m chip averaging 4.69 g/t Au





# Caballos Porphyry Copper Gold Project La Rioja, Argentina

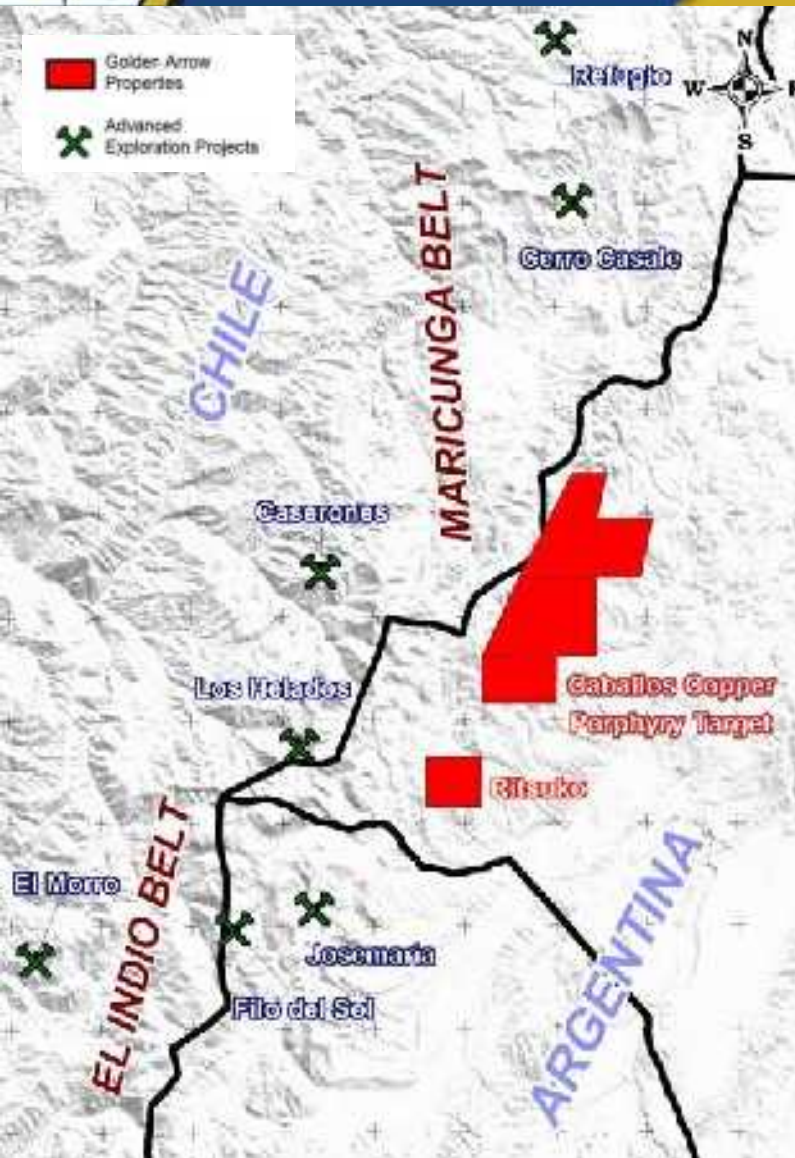
Executive Summary



**GOLDEN ARROW**  
RESOURCES CORPORATION



GROSSO GROUP MEMBER COMPANY



**Caballos and Ritsuko** located intersection of Maricunga and El Indio Belts.

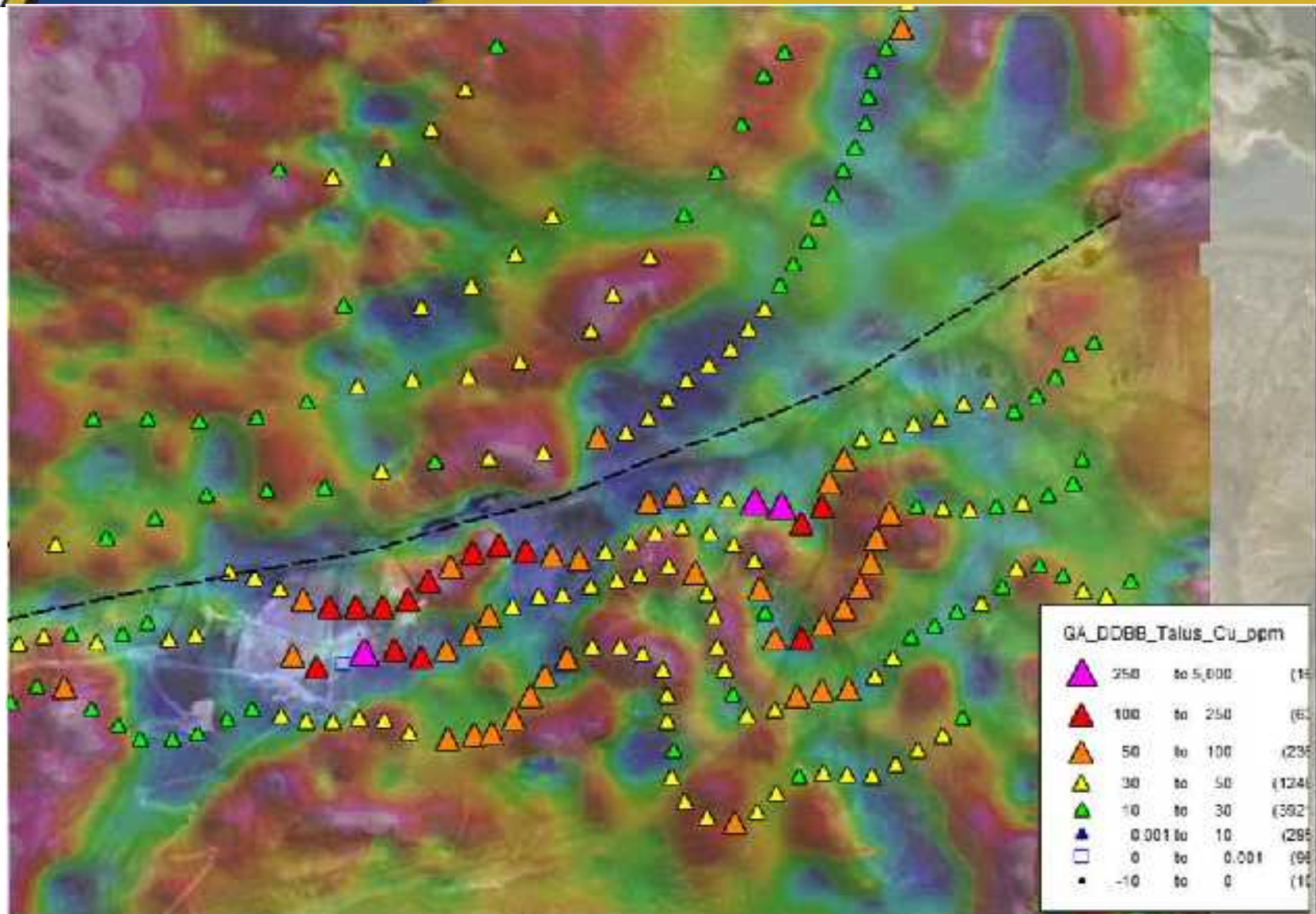
- 25,195 ha in La Rioja province.
- Main Target: Copper-Gold Porphyry
- Outcropping high grade





**GOLDEN ARROW**  
RESOURCES CORPORATION

# Caballos Mag and Talus Cu ppm.



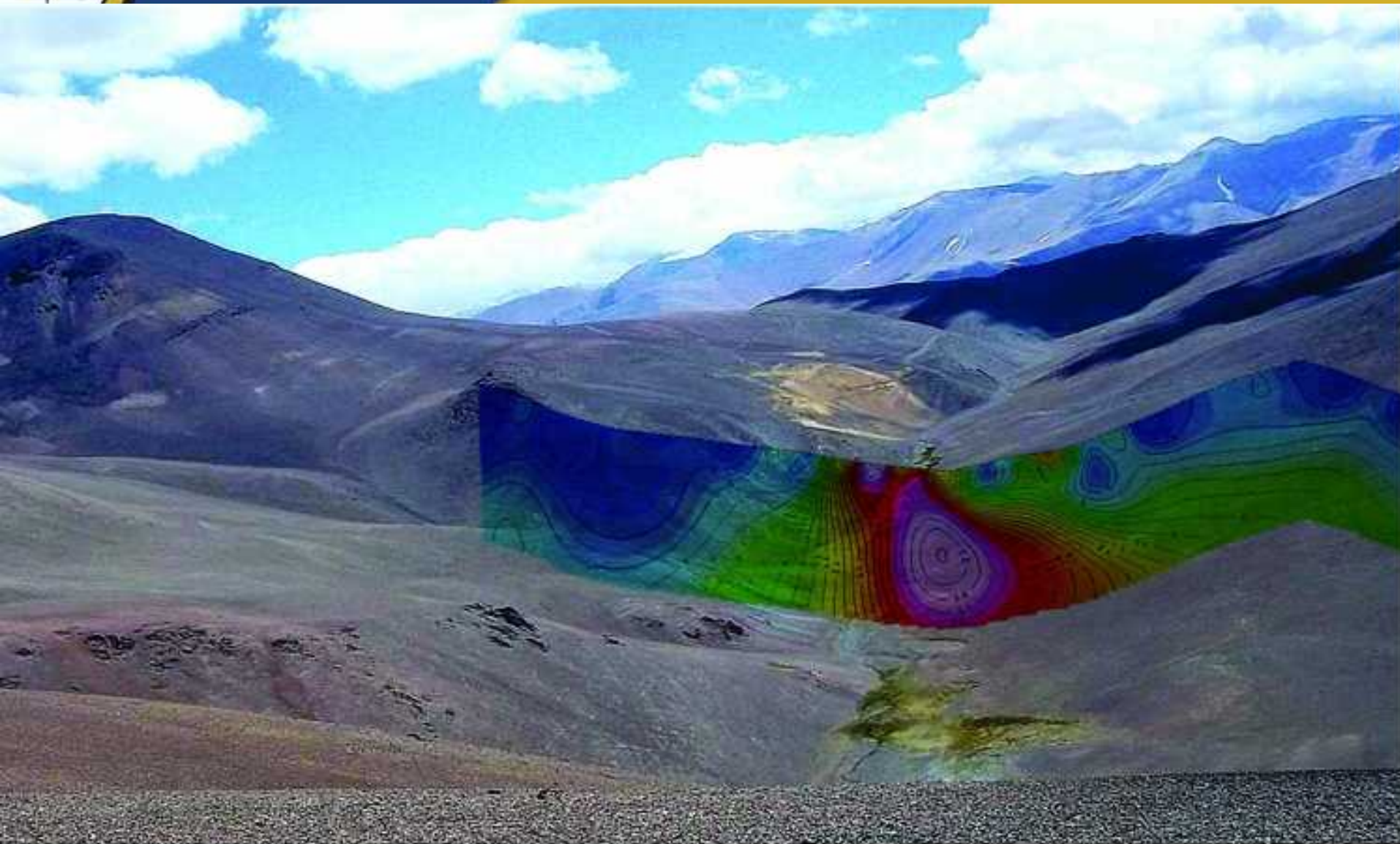
GOLDEN ARROW RESOURCES CORP.





**GOLDEN ARROW**  
RESOURCES CORPORATION

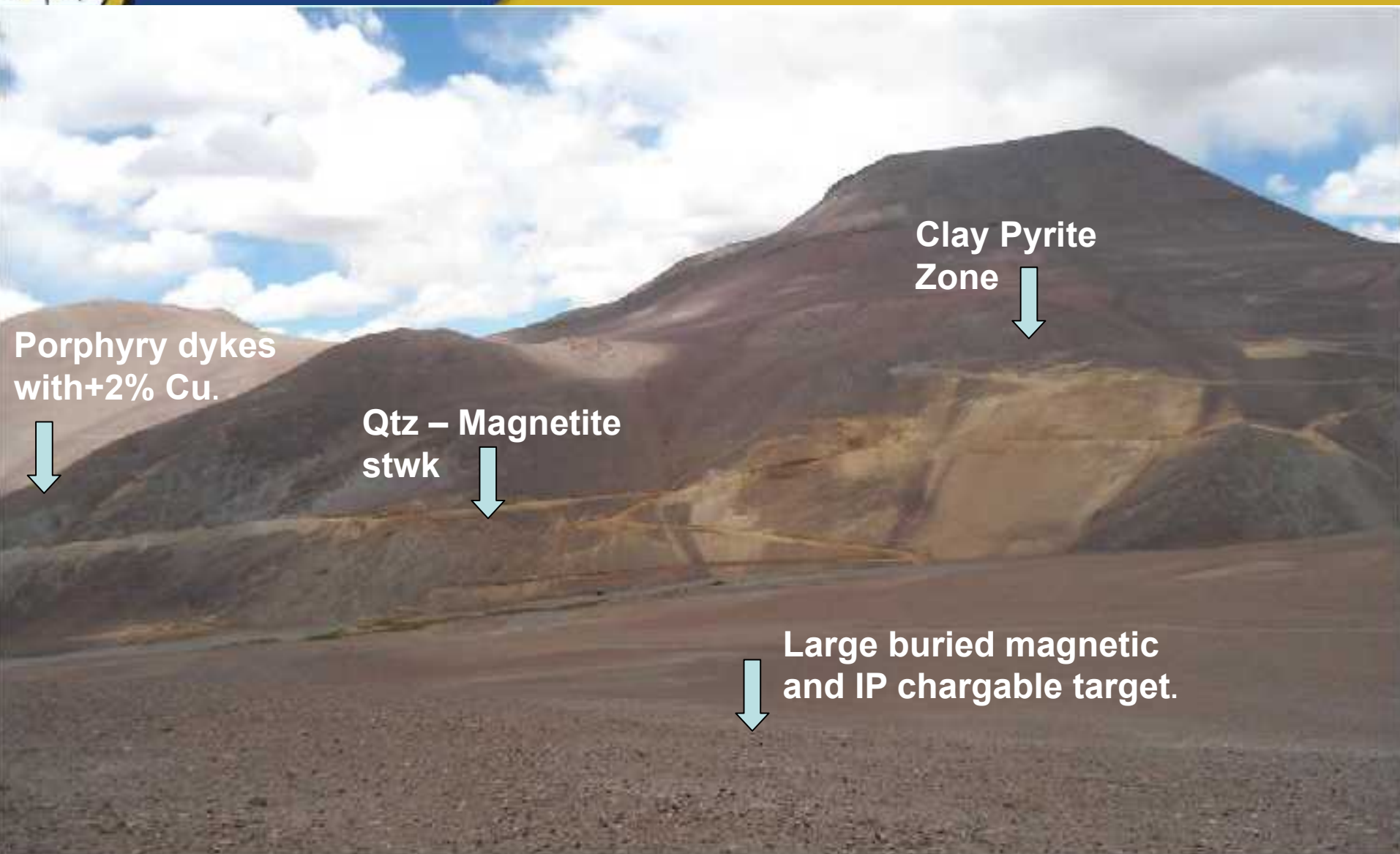
# Caballos Copper Gold Porphyry



GOLDEN ARROW RESOURCES CORP.

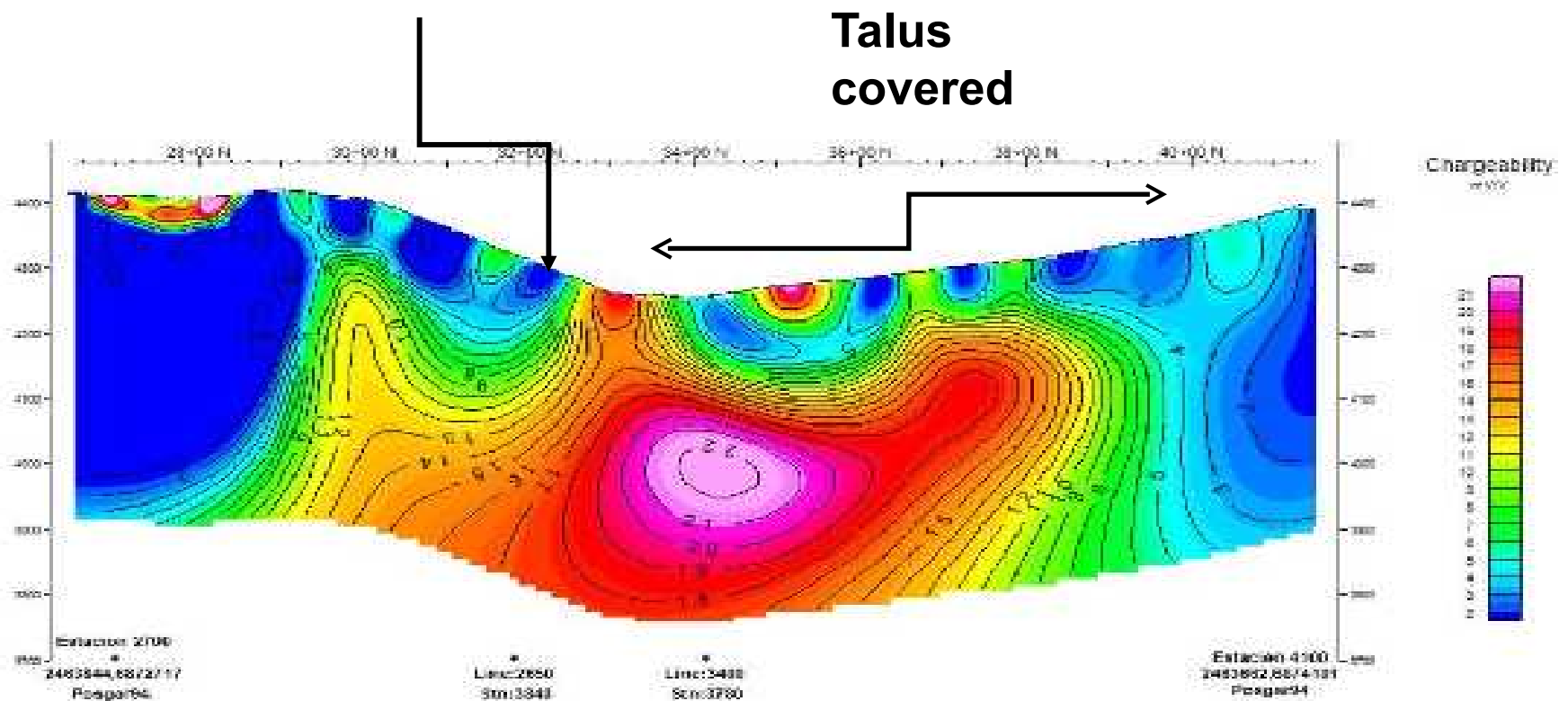


# Caballos Copper Gold Porphyry



# Caballos New Discovery in World Class Porphyry District

**Quartz-magnetite stockwork**  
**Porphyry dykes +2% Cu**







**Bruce Smith**

Exploration Manager.

[bsmith@grossogroup.com](mailto:bsmith@grossogroup.com)

Mobile +54 9 261 5329278

Direct line +54 261 4259567